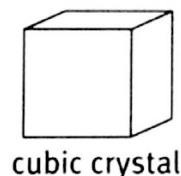
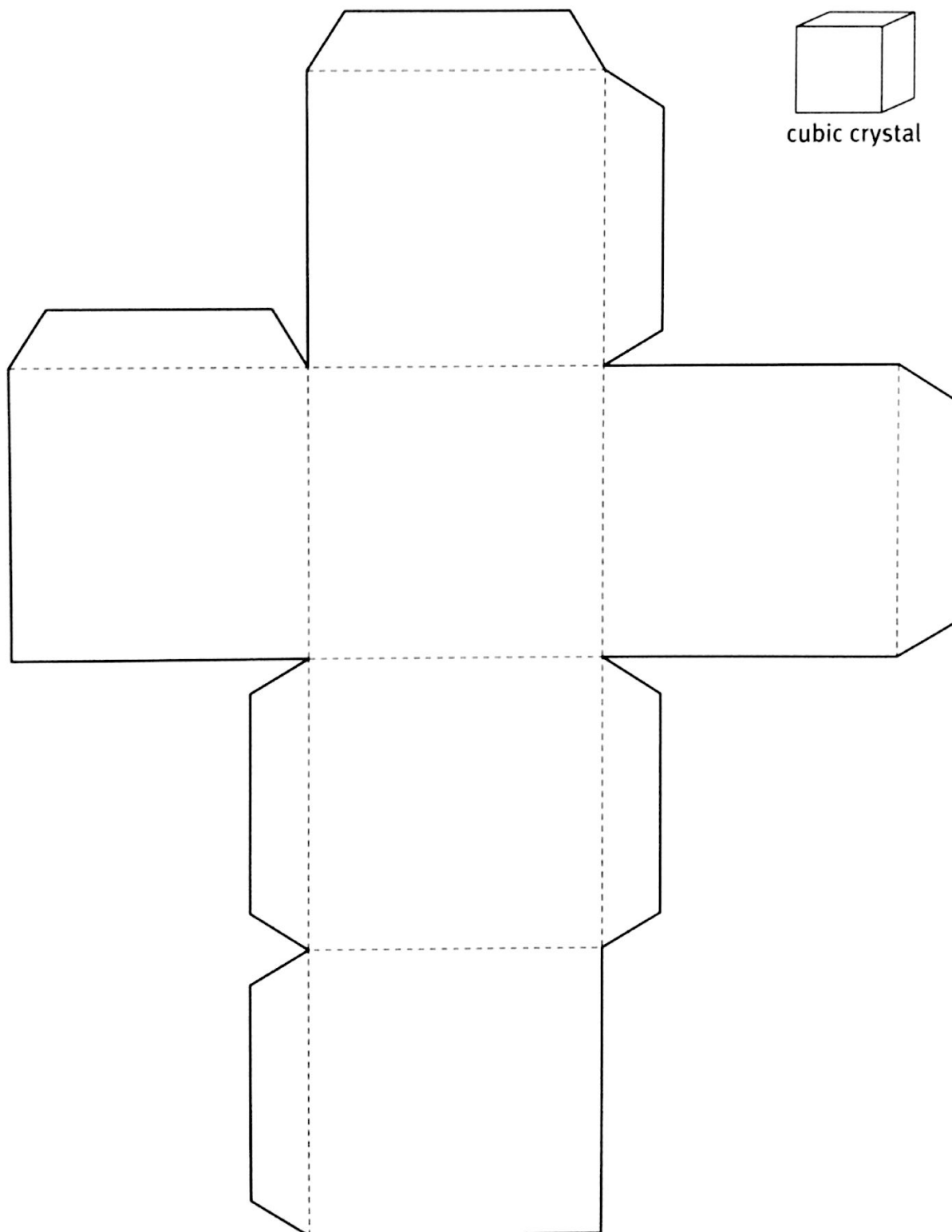


WARNING — This set contains chemicals that may be harmful if misused. Read cautions on individual containers carefully. Not to be used by children except under adult supervision.

(The chemical used in this activity is salt.)

Crystal Forms

Write the name of the crystal shape on the pattern before you cut it out.
Cut along the solid lines. Fold along the dashed lines.
Tape the model to form the crystal shape shown.



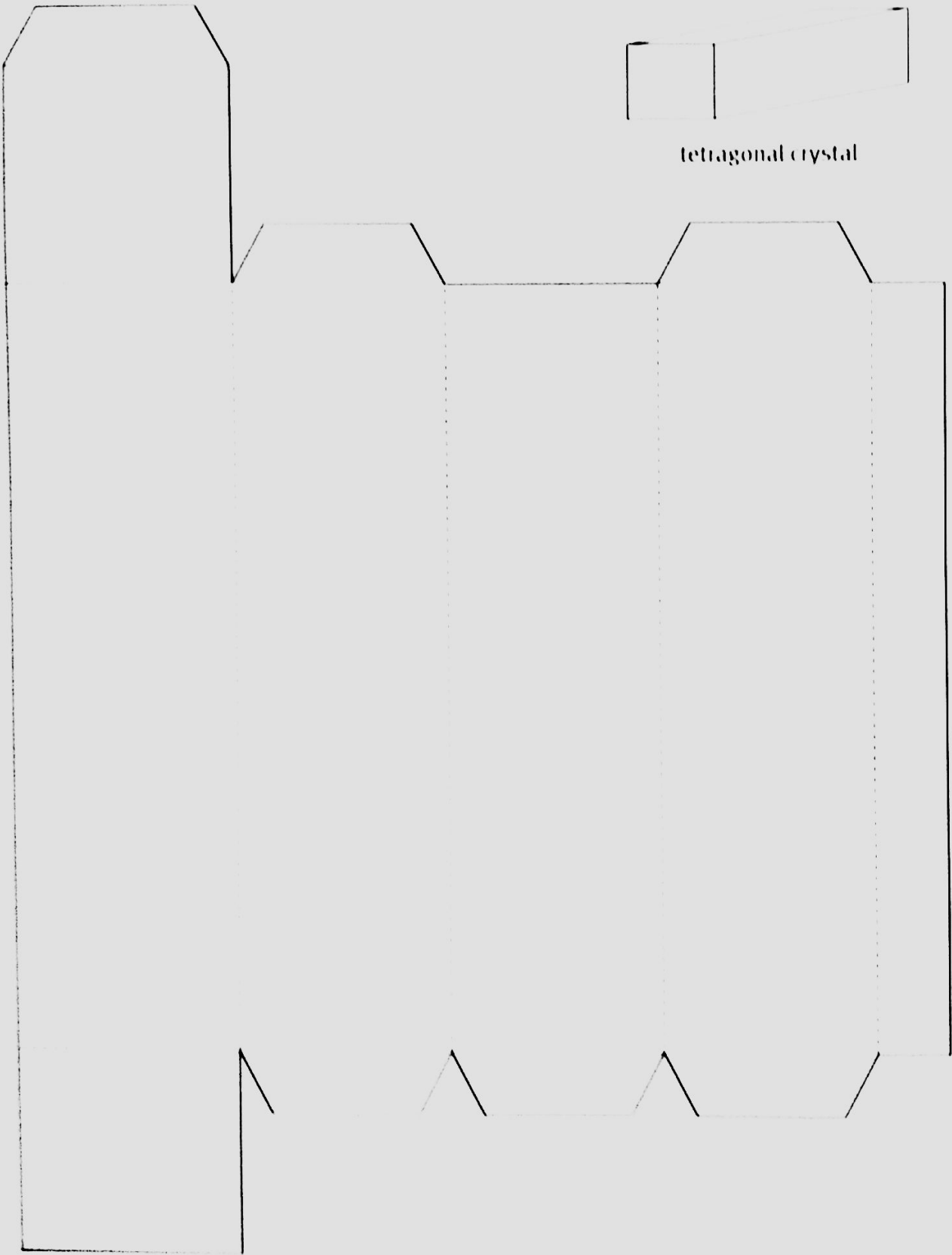
cubic crystal

WARNING — This set contains chemicals that may be harmful if misused. Read cautions on individual containers carefully. Not to be used by children except under adult supervision.

(The chemical used in this activity is salt.)

Crystal Forms

Write the name of the crystal shape on the pattern before you cut it out.
Cut along the solid lines. Fold along the dashed lines.
Tape the model to form the crystal shape shown.



tetragonal crystal

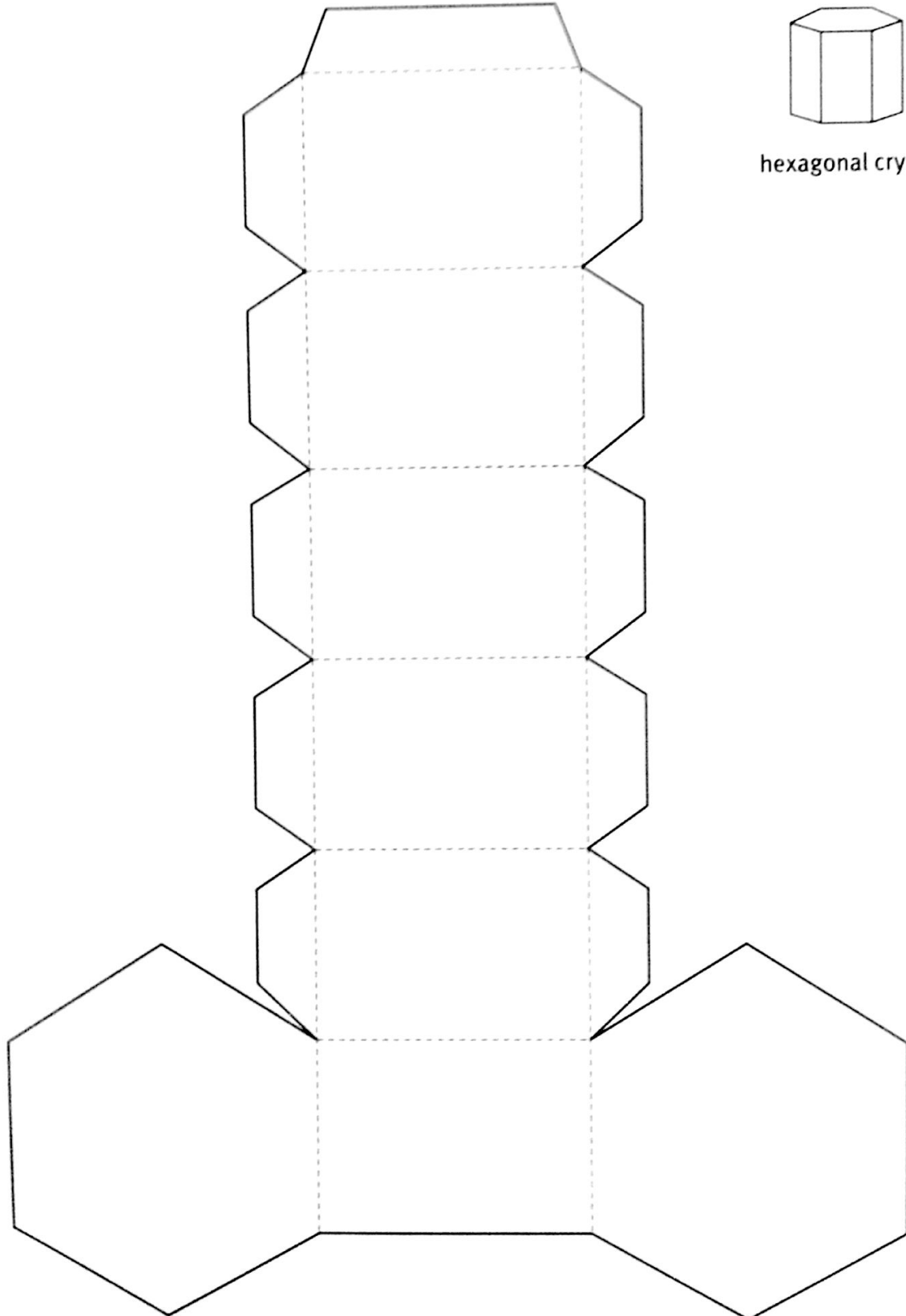
Name _____

WARNING — This set contains chemicals that may be harmful if misused. Read cautions on individual containers carefully. Not to be used by children except under adult supervision.

(The chemical used in this activity is salt.)

Crystal Forms

Write the name of the crystal shape on the pattern before you cut it out.
Cut along the solid lines. Fold along the dashed lines.
Tape the model to form the crystal shape shown.

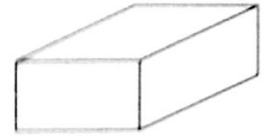


WARNING — This set contains chemicals that may be harmful if misused. Read cautions on individual containers carefully. Not to be used by children except under adult supervision.

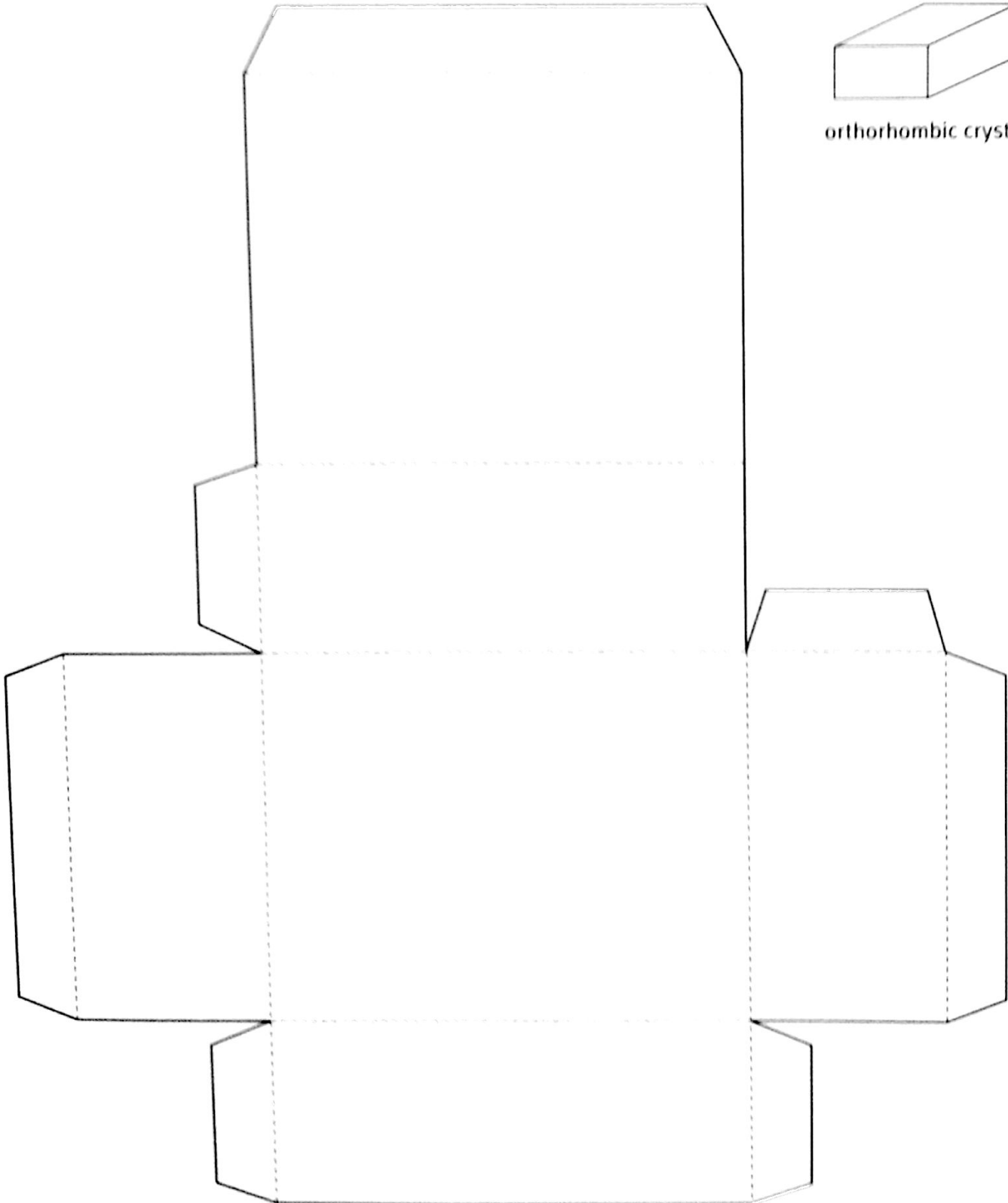
(The chemical used in this activity is salt.)

Crystal Forms

Write the name of the crystal shape on the pattern before you cut it out.
Cut along the solid lines. Fold along the dashed lines.
Tape the model to form the crystal shape shown.



orthorhombic crystal



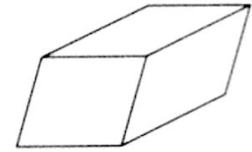
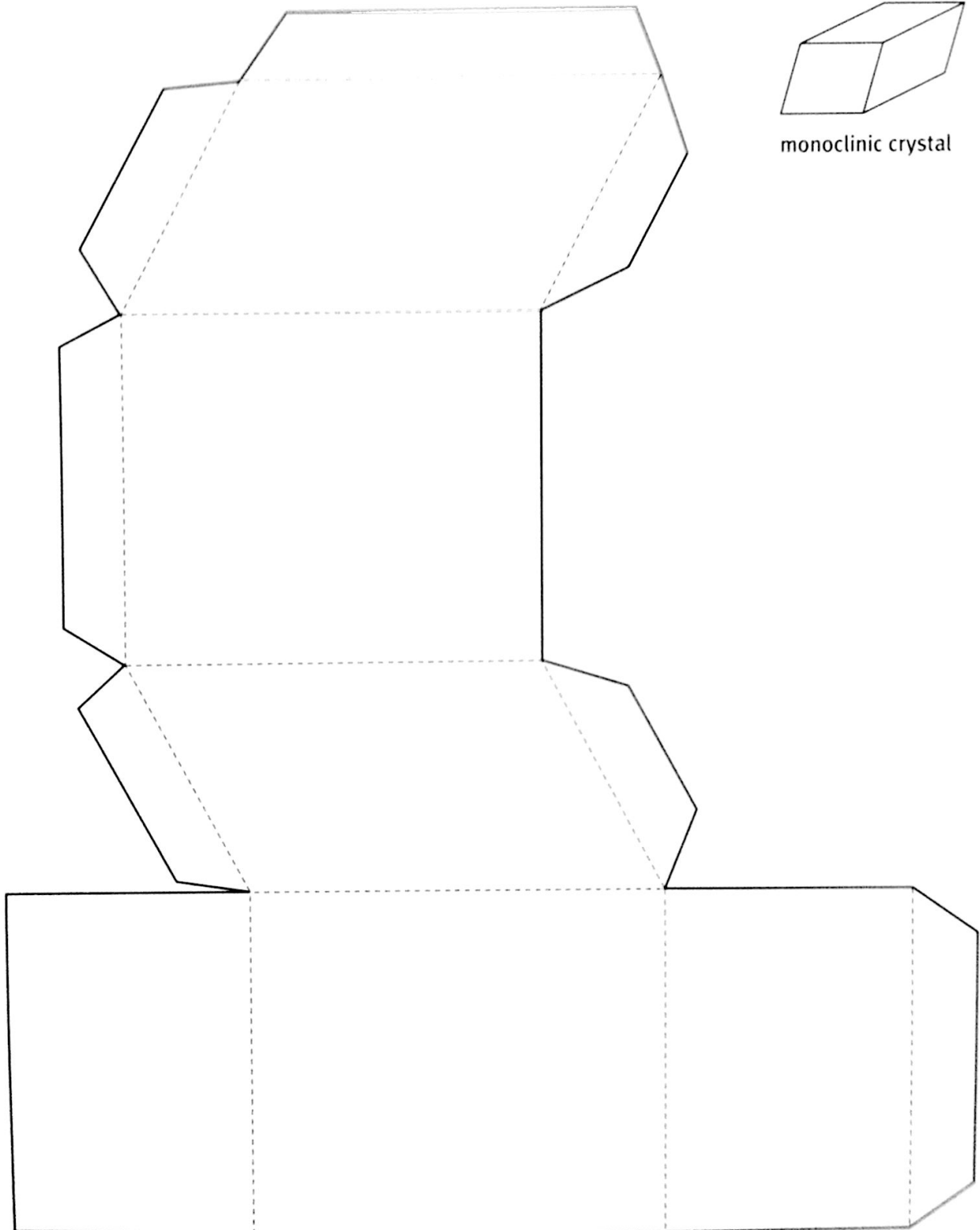
Name _____

WARNING — This set contains chemicals that may be harmful if misused. Read cautions on individual containers carefully. Not to be used by children except under adult supervision.

(The chemical used in this activity is salt.)

Crystal Forms

Write the name of the crystal shape on the pattern before you cut it out.
Cut along the solid lines. Fold along the dashed lines.
Tape the model to form the crystal shape shown.



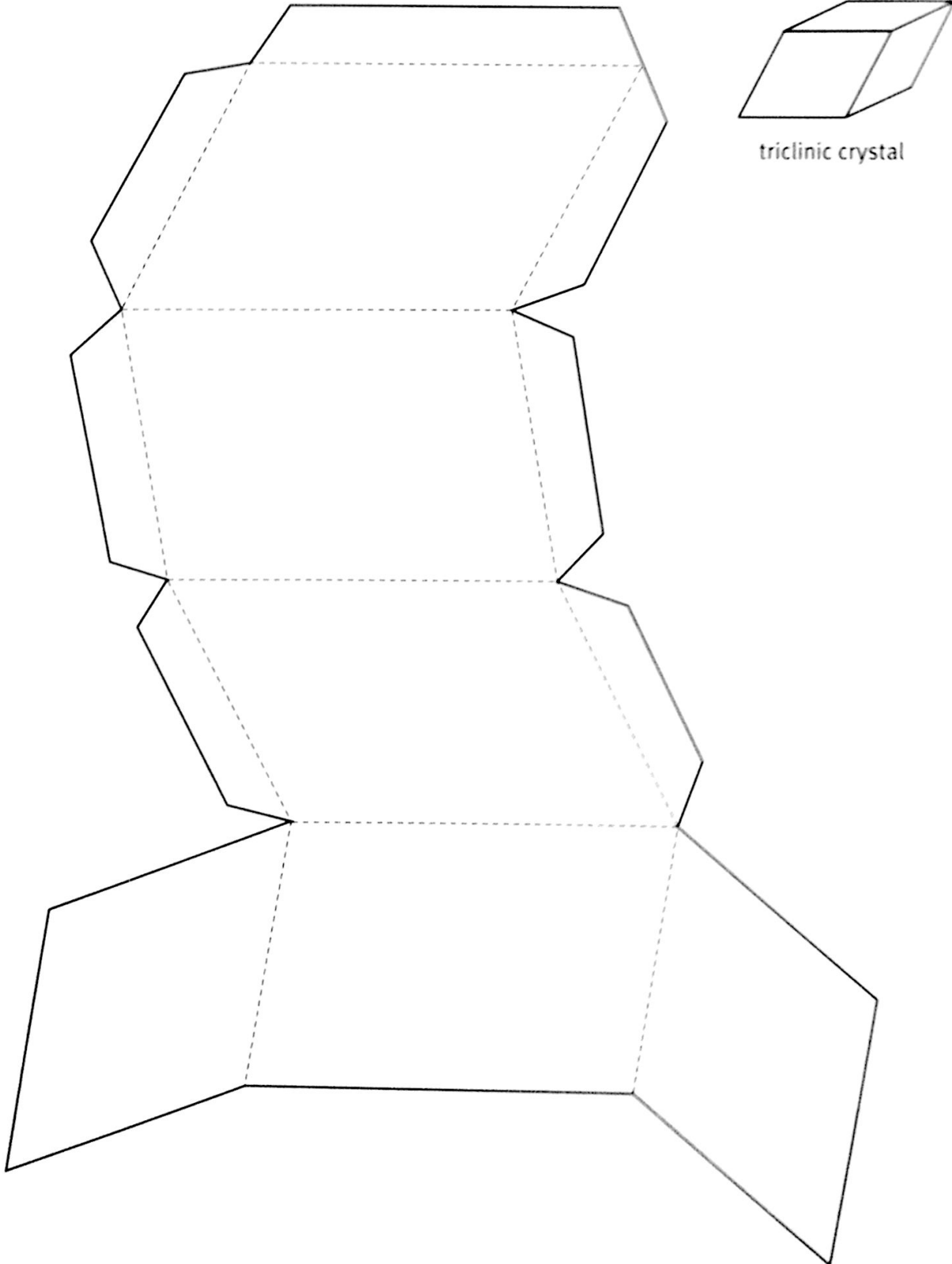
monoclinic crystal

WARNING — This set contains chemicals that may be harmful if misused. Read cautions on individual containers carefully. Not to be used by children except under adult supervision.

(The chemical used in this activity is salt.)

Crystal Forms

Write the name of the crystal shape on the pattern before you cut it out.
Cut along the solid lines. Fold along the dashed lines.
Tape the model to form the crystal shape shown.



triclinic crystal